



NeedleLeaf Foundation..the saviour

Initiation Ceremony

of

Charitable Schemes in Himachal Pradesh

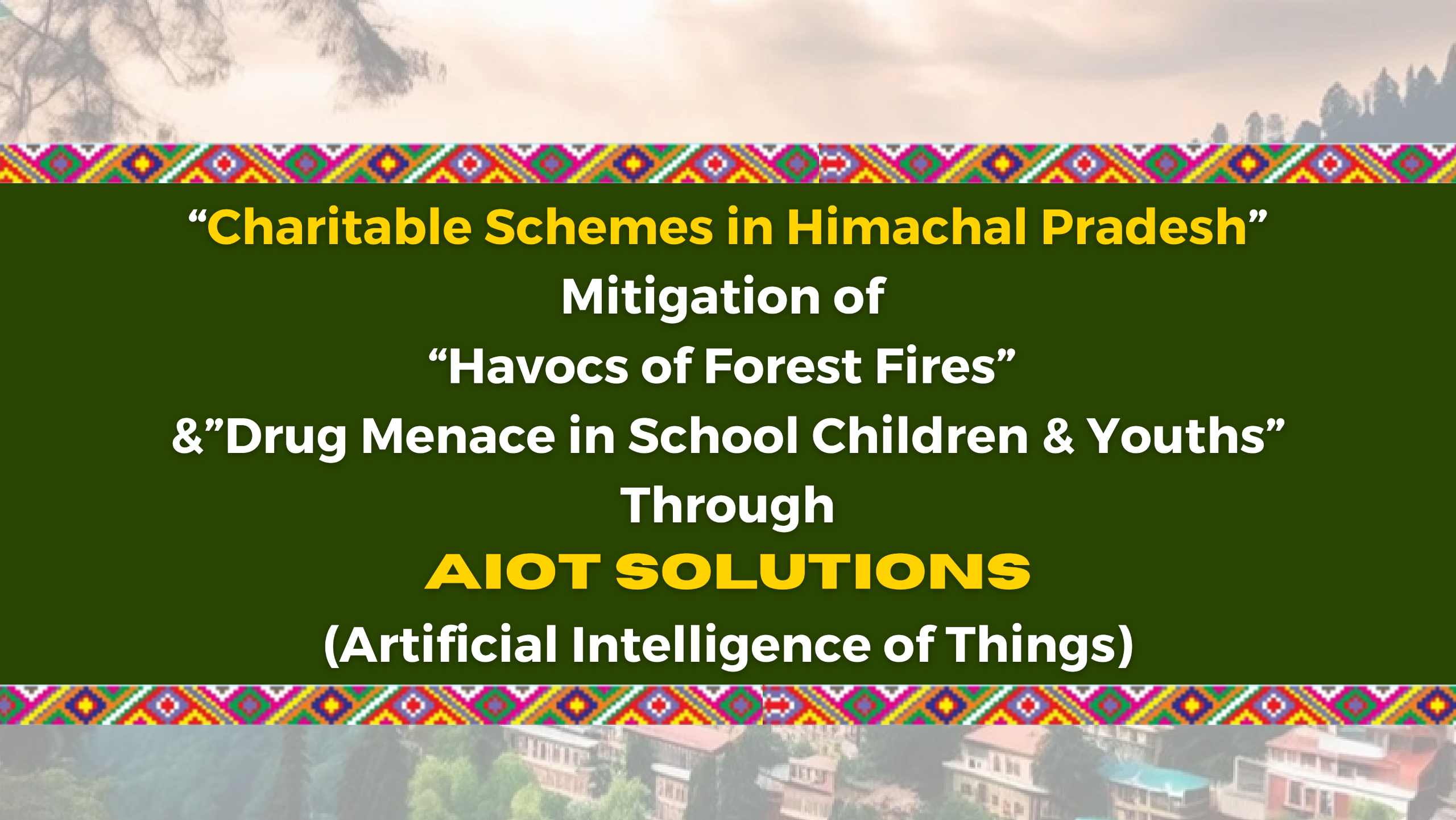

By the gracious hands of

SH. SUKHVINDER SINGH SUKHU

Hon'ble Chief Minister, HP

14th January 2025 | Eilerslie, HP Secretariat, Shimla





“Charitable Schemes in Himachal Pradesh”
Mitigation of
“Havocs of Forest Fires”
& “Drug Menace in School Children & Youths”
Through
AIOT SOLUTIONS
(Artificial Intelligence of Things)



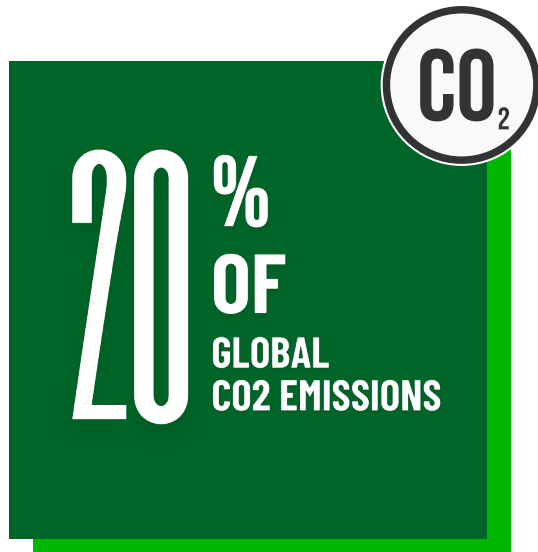
HAVOC OF FOREST FIRES



DRUG ABUSE AMONG SCHOOL CHILDREN

AIOT SOLUTIONS
ARTIFICIAL INTELLIGENCE OF THINGS
PROTECTING INVALUABLE ASSESTS

IMPACT OF WILDFIRES

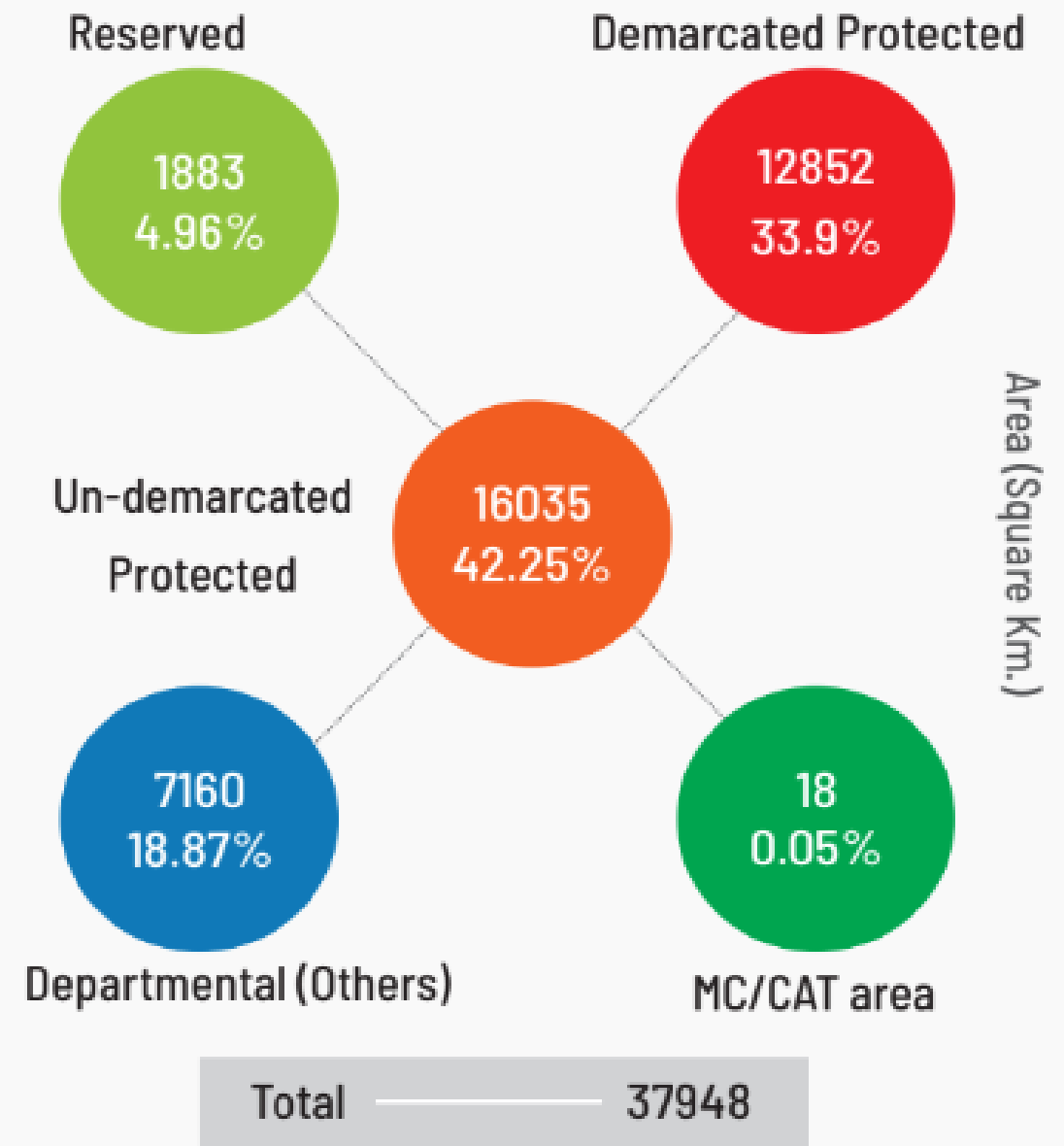


Himachal Pradesh – Land of Gods

Blessed with precious and invaluable Forest Cover

	Live Stock (Cubic Meter)	Market Value (Crore)
 Deodar	15508386	105925
 Supus	19333821	102628
 Kail	8890462	64972
 Chir Pine	6509246	36189
 Khair	695192	9673
 Sal	292996	1461
Total	4,82,30,102	3,20,848

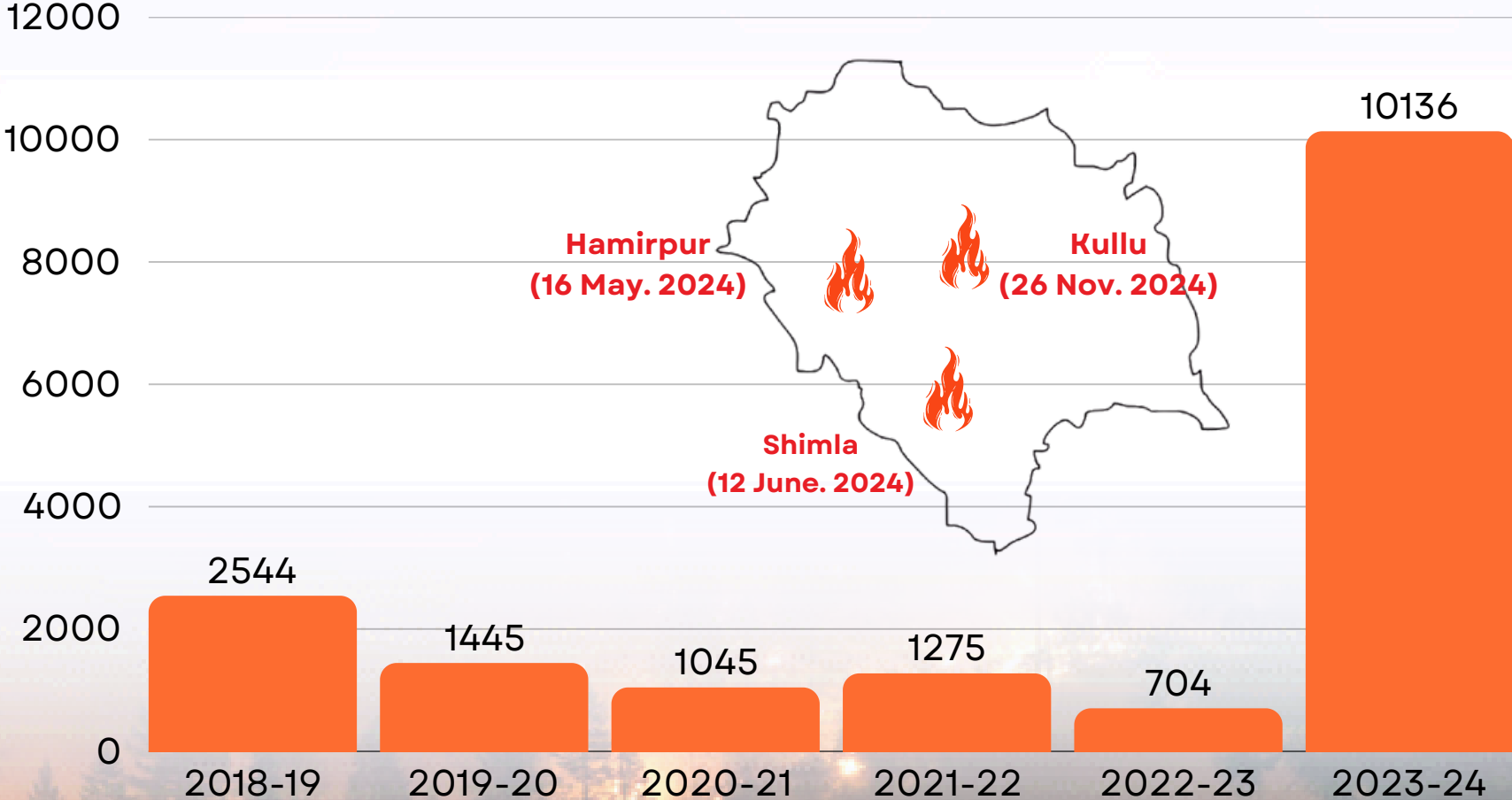
Legal Classification of Forests



Himachal Pradesh has registered a massive increase in the number of forest fires during last year from 704 (Nov 2022-June 2023) to 10,136 (Nov 2023-June 2024)

Forest Fire Situation:

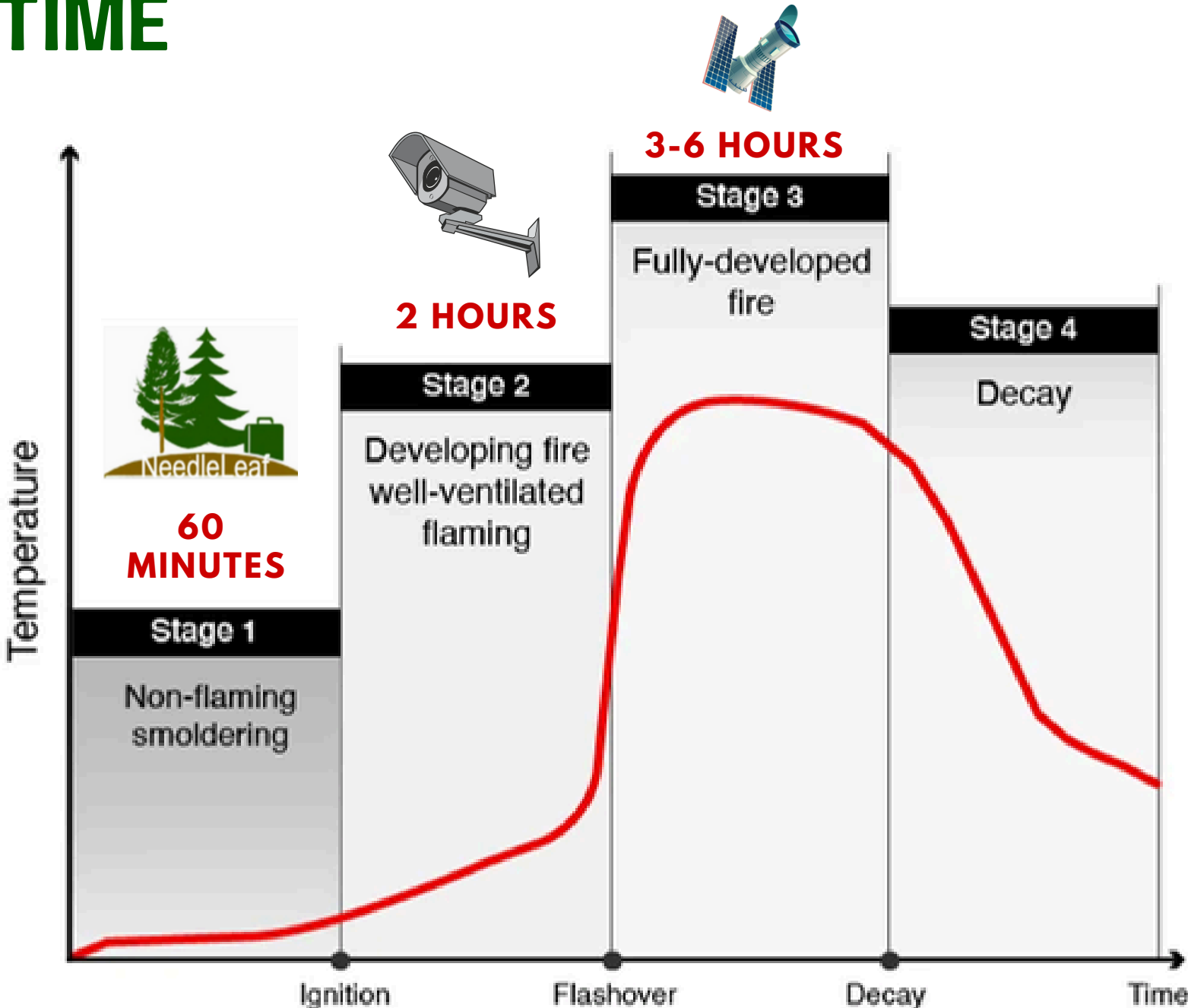
During March **2024**, the Highest number of forest fires were reported from **Mizoram** (3,738) , **Manipur** (1,702), **Himachal Pradesh** (1,684), **Assam** (1,652), **Meghalaya** (1,252) and **Maharashtra** (1,215) as per **FSI**.



CRITICALITY OF TIME



is all we have.



STUDENTS' SECURITY SAFETY & WELLBEING



According to IGMC
SHIMLA 40% OF YOUTH
in **HIMACHAL**
are involved in
DRUG ABUSE

Interiors of Kullu, Chamba, Mandi, and Shimla districts are the country's biggest drug-producing areas.

Police records show
50,000 acres of land under
CANNABIS CULTIVATION
in the **KULLU VALEY** alone.

In the past 5 years, 70 foreigners (mainly Britons, Israelis, Dutch, Germans, Japanese, and Italians) have been arrested under the Narcotic Drugs and Psychotropic Substances Act.



AREA OF SCOPE



Primary Schools

Schools

10000

Students

5.76 Lakhs



High Schools

1300

5.80 Lakhs



Secondary Schools

1675

2.10 Lakhs

Total Schools

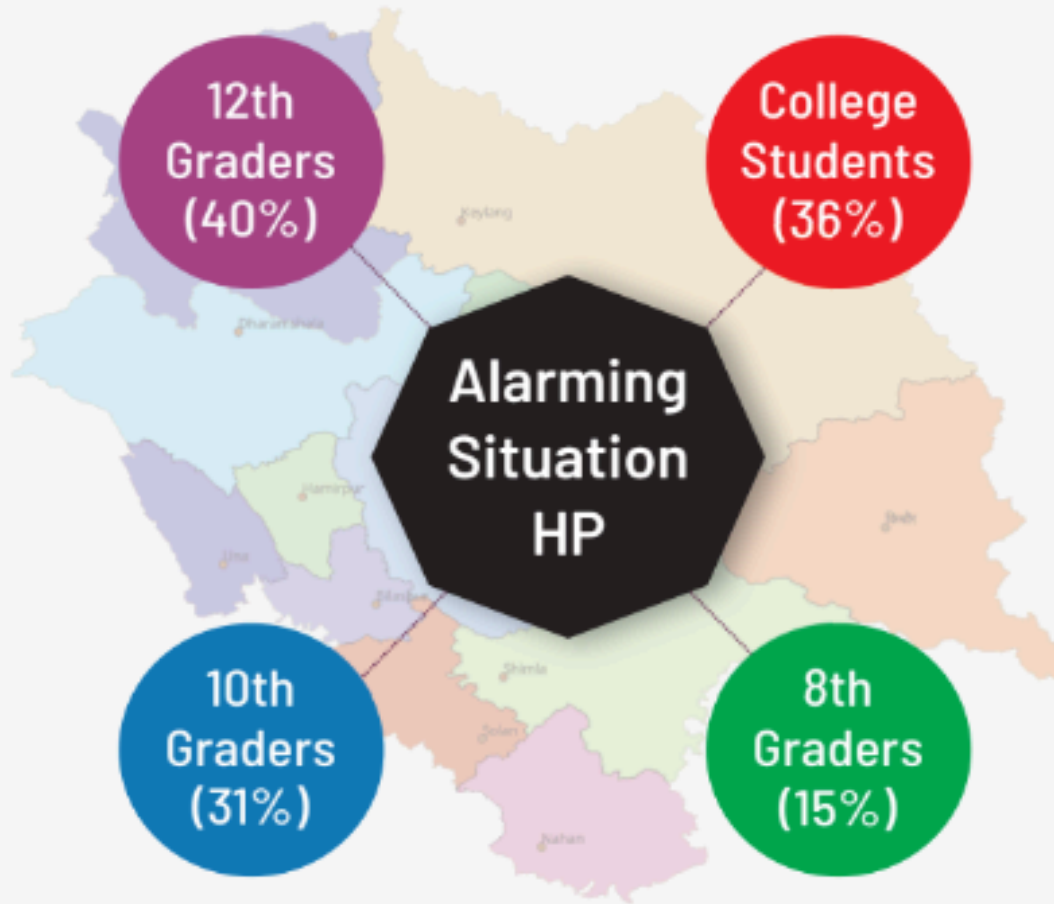
12975

Total Students

13.66 Lakhs



MULTI-DIMENSIONAL SOLUTIONS AGAINST DRUG MENACE



Studies by university scholars, governmental departments, and independent groups reveal that marijuana usage rises notably among secondary school students, influenced by local cultivation and accessibility

OUR JOURNEY

**Proposal
(Brochures,
Website)**



1

**DPR
(Detailed
project
report)**



2

**MVS Setup
(Funding,
Team Building
, Kick-off)**



**Mass
deployment**

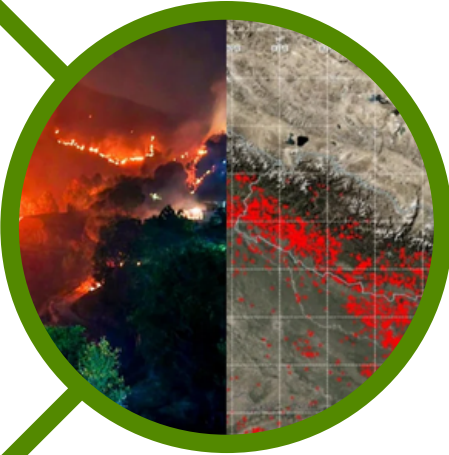
4

**βeta-
Launch**



5

ULTRA-EARLY DETECTION & PREVENTION OF FOREST FIRES



Historic data of **Humidity & Temperature**



Smoke Detection



Chain Saw sound Warning Alarms



Fastest **geo location routing**

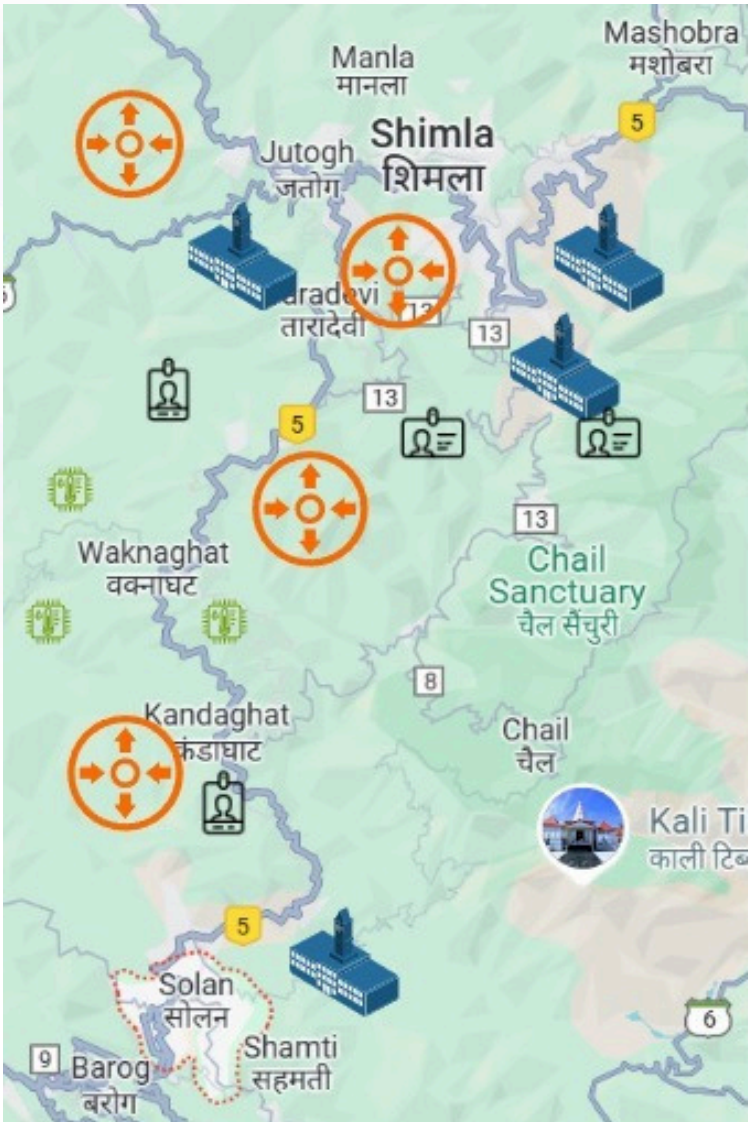


STUDENTS' SECURITY, SAFETY & WELLBEING



- **Enhanced Safety:** Via Real-time tracking
- **Attendance Automation:** Simplified tracking and reporting
- **Security Fencing:** Prevents unauthorized access
- **Emergency Preparedness:** Quick location sharing
- **Efficient Management:** Facilitates better resource allocation.
- **Student Behavioural analysis:** Prediction for prevention

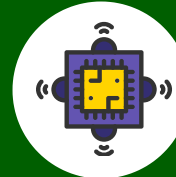
PROPOSED AIOT SOLUTIONS



MVS Setup



Pilot
Deployment



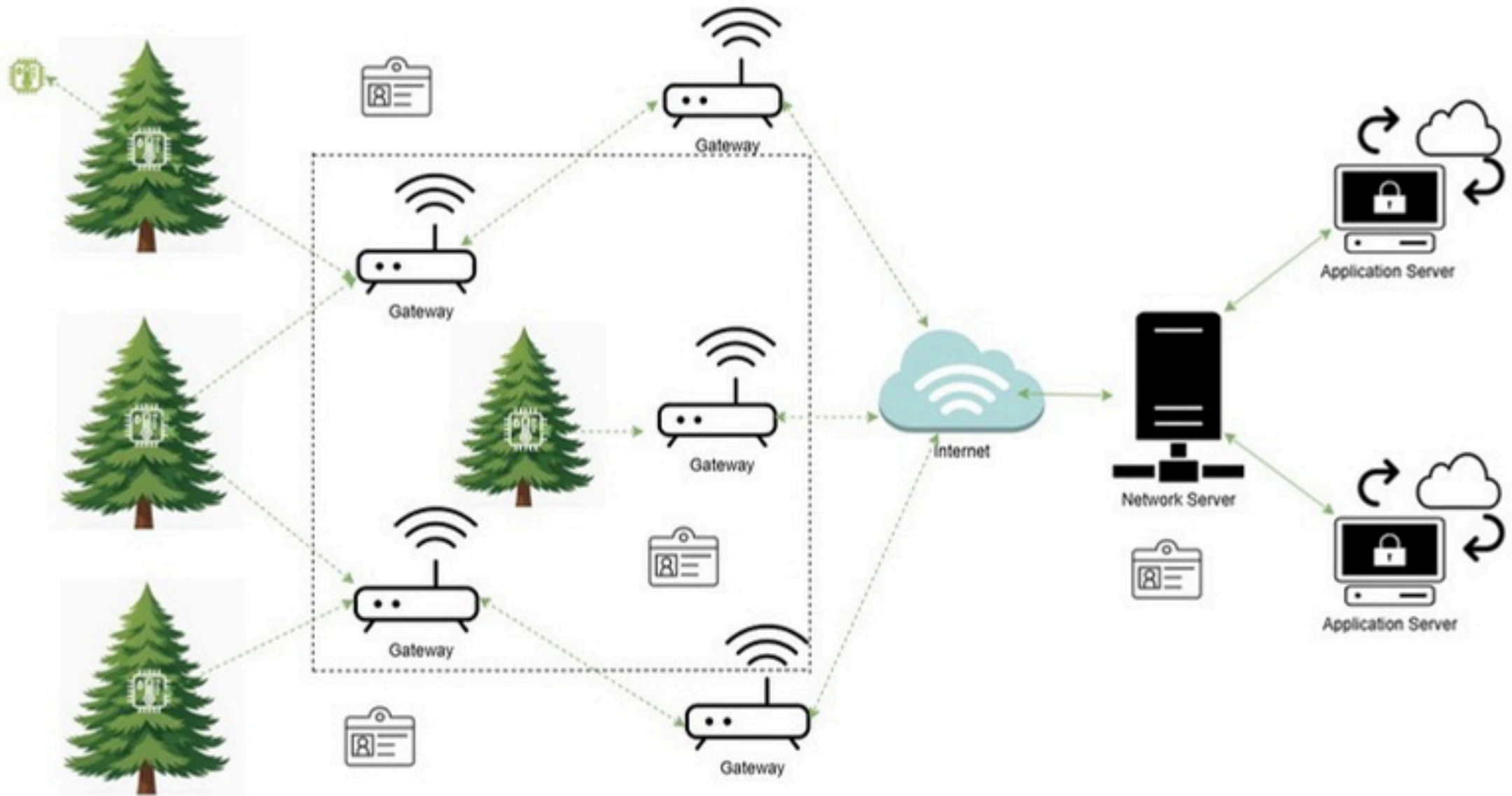
AIoT



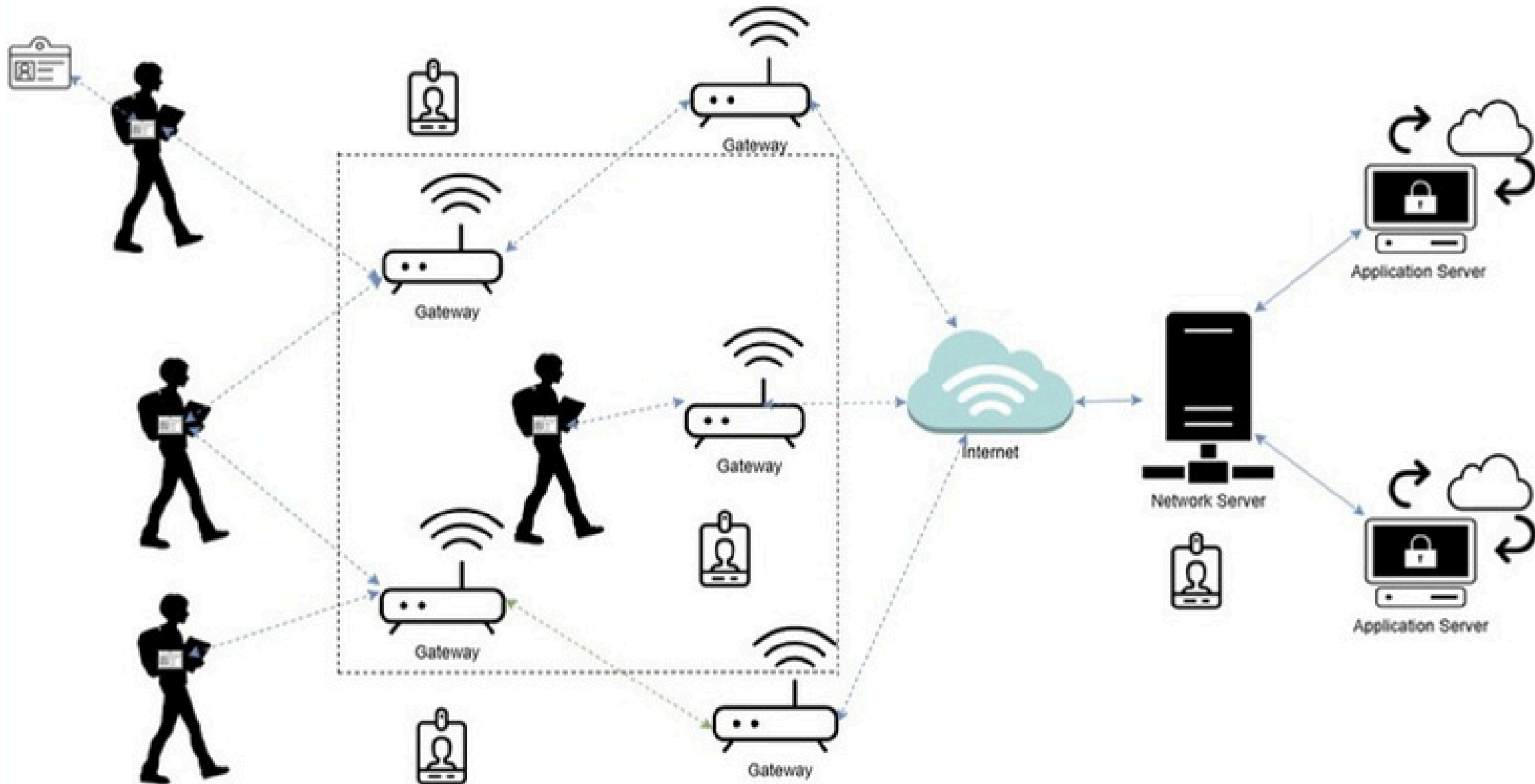
Expansion
(Himachal Pradesh)



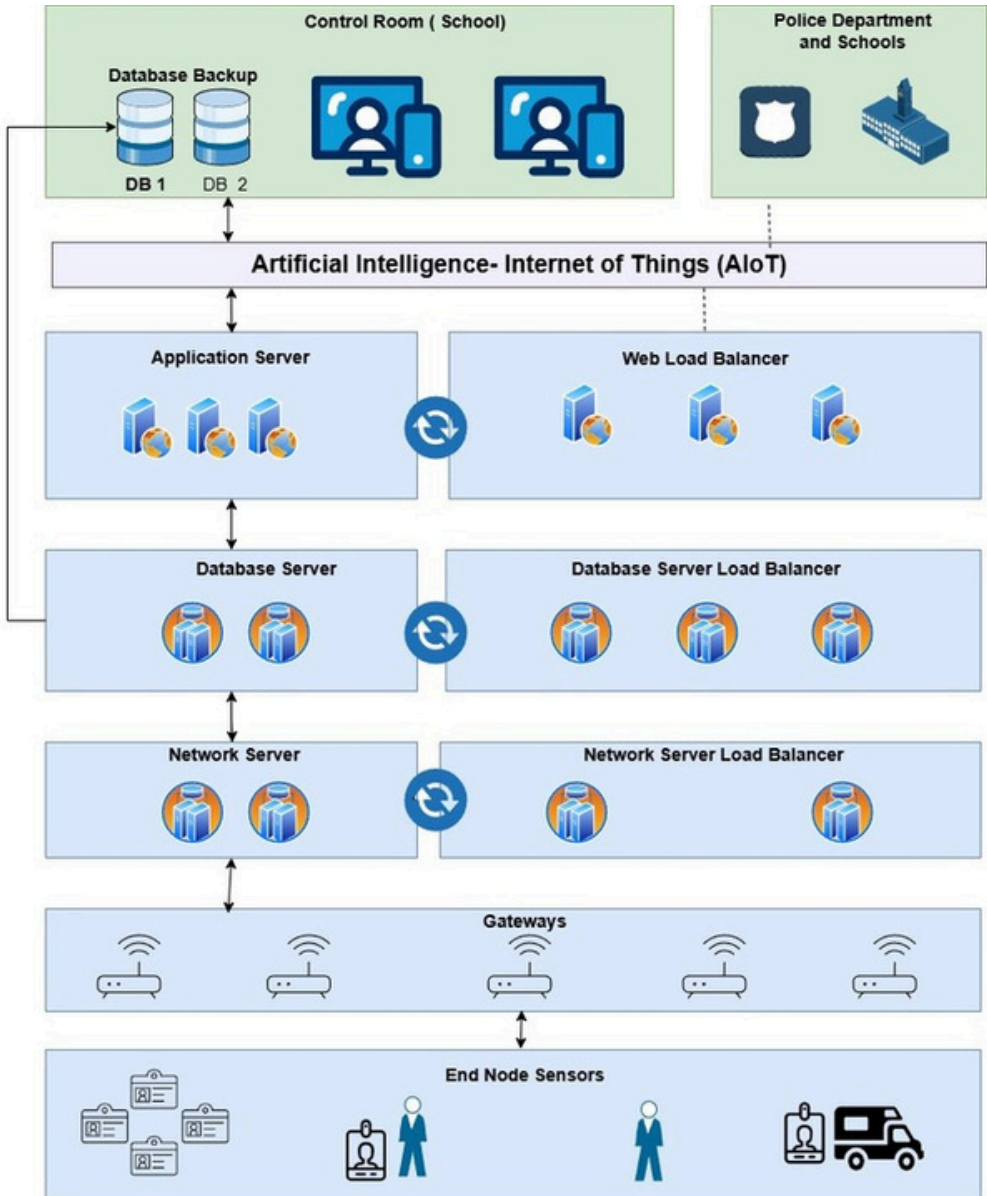
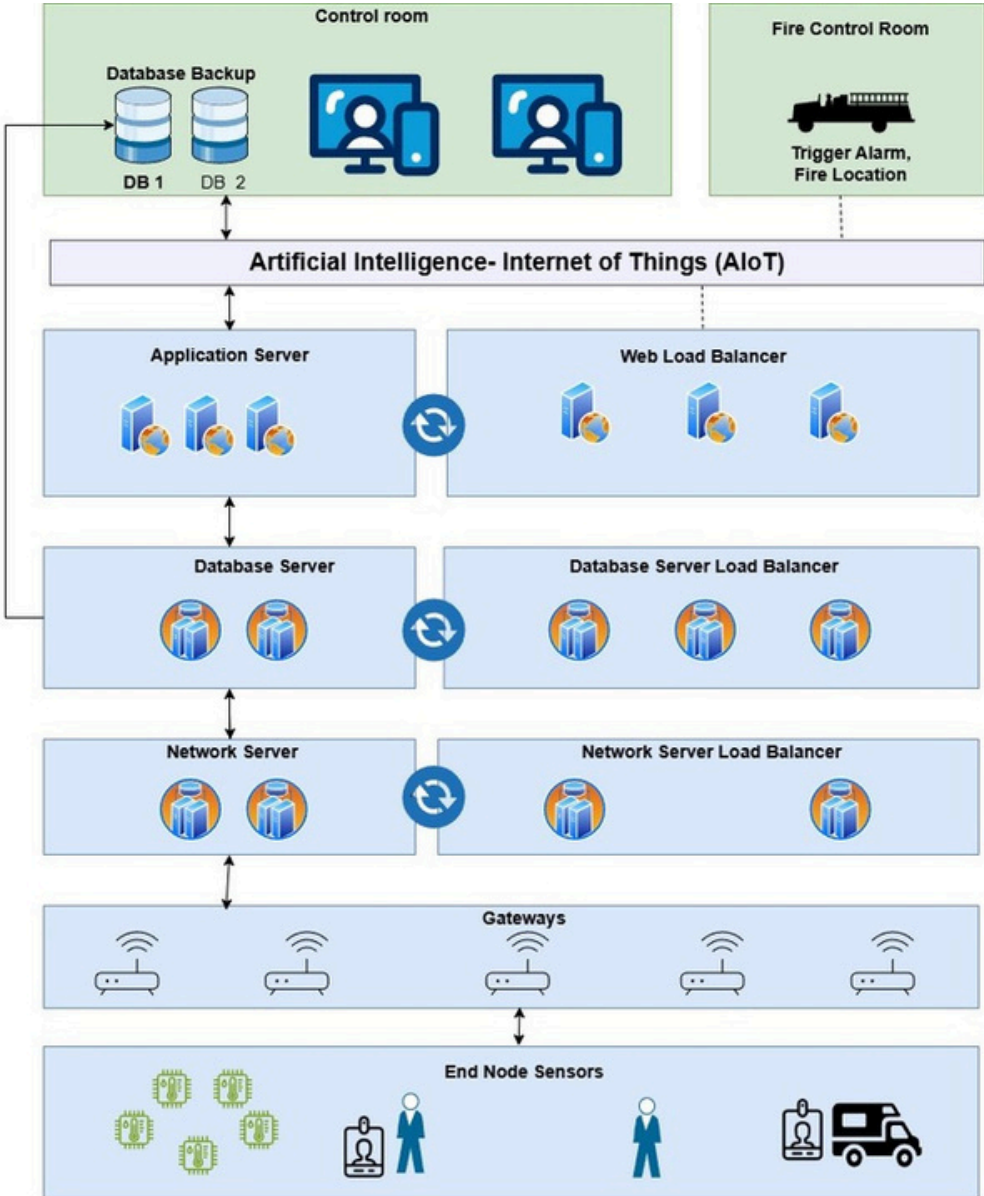
TECHNICAL ARCHITECTURE (FOREST)



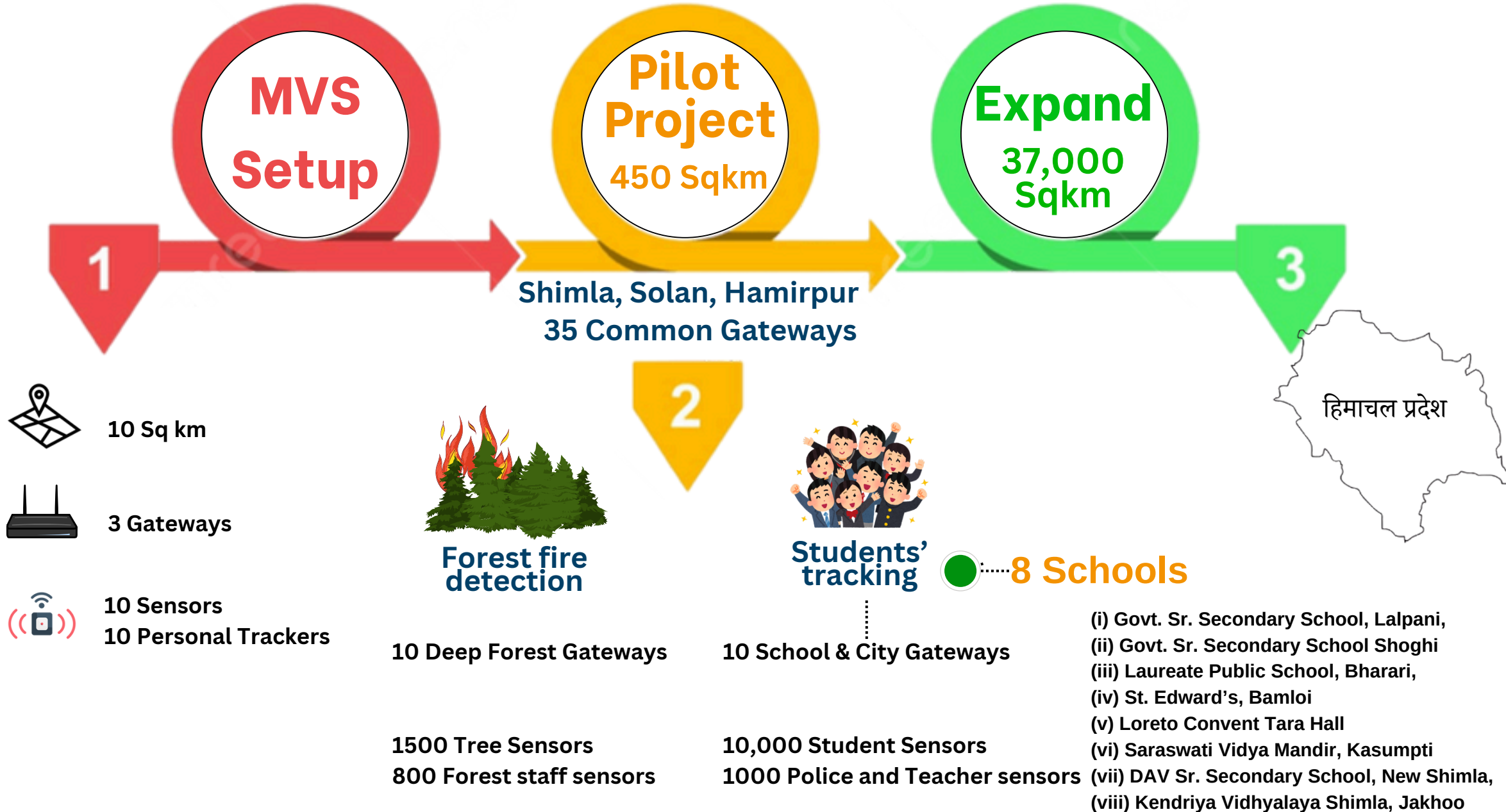
TECHNICAL ARCHITECTURE (SCHOOLS)



CUSTOMIZED SOLUTION ARCHITECTURE



EXECUTION STRATEGY



STRATEGIC EXECUTION PHASES



Pilot Project



6 Months

Rs 12 Crore



Entire
Himachal Pradesh
3 Year

Rs 125 Crore

MVS

- Identify Vendors for Hardware
- Procure Hardware for MVS
- Analyze Network (Wi-Fi, GSM) Coverage
- Power facility Survey
- Forest Density Analysis
- Validate Gateways Coverage
- Validate Gateways Coverage
- Configure Devices
- Network Server Configuration

Configure & Build

- Network Server Setup
- Database Server setup
- Mass Hardware Procurement
- Application development
- Geographic Mapping of Gateways & Sensors

Deploy

- Enable Power Infrastructure
- Tower mounting for gateways
- Gateways Installation
- Sensors Installation
- Gateways and Sensors configuration

Testing

- End User testing
- Simulated Database display
- Data Collection
- Felid Engineer Training
- Control Room Setup

Operations & Maintenance

- Support Desk
- Continuous Monitoring
- Data Collection Modelling
- Data Storage & Backup
- Server Monitoring

NEEDLELEAF FOUNDATION...THE SAVIOUR

BOARD OF FOUNDER TRUSTEES



Er. Suneel Grover
CHAIRMAN

Ex MD HPSLDC, GoHP
(Tech Expert)



Dr. Anil Chauhan
MEMBER

Ex-Director ME&R, GoHP
(Medical Expert)



Sh. Pradeep Kumar
MEMBER

Ex-IG Police, HP
(Public Safety Specialist)



Sh. S.N. Kapur
MEMBER

Ex. CE, HPSEBL
(Tech Advisor)



Sh. Ajay Kochhar
MEMBER

Sr. Advocate, HP High Court
(Criminal Lawyer)



Sh. Rajeev Sood
TREASURER

Chartered Accountant
(Accounting Specialist)



Sh. Manmohan Singh
SECRETARY

Ex-Member, HPSEBL
(Management Analyst)



Dr. Sanjay Sood

WildLife & Forestry Expert
IFS, Pr. CCF-Cum-Nodal
Officer, FCA



Dr. Shashi K. Sharma

Knowledge & Outreach
Expert
Prof (Journalism & MCA),
HPU

STRATEGIC ADVISORS

NEEDLELEAF FOUNDATION'S TECHNICAL ARM (THE IMPLEMENTOR)



Akshay Sharma

Director Founder and Inventor

Vast experiences in networking and semiconductors, chip technologies



Kotish Grover

Director Founder and Inventor

Ex-VIT/POLIMI Professional and experienced in Sensors, System Modeling



Sunita Sharma

Managing Director

Ex-IIT/IIM Professional with experiences in Business transformation using Futuristic technology.



Ayush Maheshwari

Principal Consultant

Ex IIT/IIM Management consultant and investment banker.



Yatharth Chaturvedi

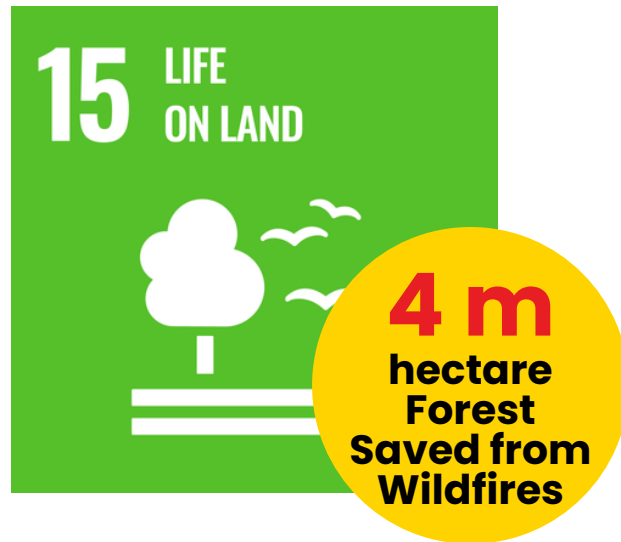
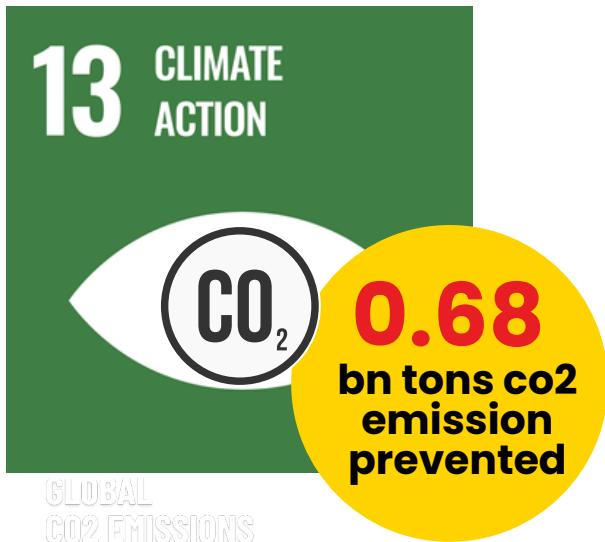
Strategic advisor

Ex IMA, Anthropologist and specialist in Geography and International relations

NEEDLELEAF Foundations' Technical Arm (NeedleLeaf India Pvt Ltd.)

A Start-up founded by Himachali Entrepreneurs and Alumni of premier institutes such as NIT, IIT , IIM brings together extensive expertise of AIOT technology and solutions

MEASURABLE CONTRIBUTION TO SDG



**LET'S JOIN HAND TOGETHER TO MAKE HIMACHAL
NUMBER ONE STATE IN ASIA IN THESE ENDEAVOURS TO
HAPPEN**



Approvals & Permission



Collaboration



Execution

We seek the **approval, support, and collaboration** From **Forest Department, Education Department, Police Department, City Municipal Corporations** to ensure the successful implementation of our project.....*Govt. Intervention Solicit*



*Thank
You*